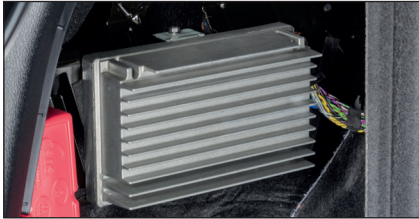
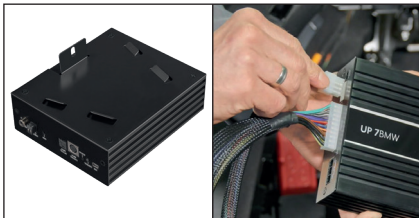


# Easy installation

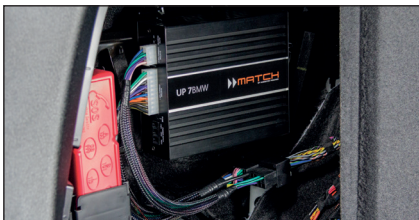
1. Remove the original amplifier



2. Fasten the included mounting plate and plug & play adapter cable



3. Fix the UP7 BMW to the original mounting position and connect the adapter cable to the vehicle cable harness



Done!



Installation video in real time!

# AUDIOTEC FISCHER

INNOVATIVE CAR AUDIO



Audiotec Fischer is certified according to DIN EN ISO 9001:2015 and DIN EN ISO 14001:2015 and a valued supplier of well-known car manufacturers

Hünegräben 26  
57392 Schmallenberg  
Germany

Phone: +49 2972 9788 0  
[match@audiotec-fischer.com](mailto:match@audiotec-fischer.com)  
[www.audiotec-fischer.com](http://www.audiotec-fischer.com)



**MATCH**  
BY AUDIOTEC FISCHER

## UP 7BMW



The Plug & Play  
sound upgrade for  
BMW HiFi sound systems

## Simply more music!



### 100% Plug & Play

Easiest installation at the original position via included plug & play adapter and mounting plate. Fits for all BMW cars of the models E8x, E9x, F1x, F2x, F3x, G3x and several others which are factory-provided with the "HiFi sound system" (option 676).



### More power

A significant increase of sound volume as well as improved tonal precision thanks to a total output power of 645 Watts / RMS. Intelligent protection circuits prevent the original speaker from overloading.



### Perfect sound

A vastly improved sound performance with brilliant highs and loads of bass power compared to the OE sound system thanks to all-new sound features and extensive digital sound processing. Pristine tonality and staging on all seats are guaranteed.



### Future-proof

Extendible thanks to MATCH Extension Card slot (MEC) for additional sources like Bluetooth® Audio Streaming, USB-Audio etc.



### Simple DSP setup

Easy DSP configuration via car-specific initial setups which can be adjusted to personal preferences using our intuitive DSP PC-Tool software.



### Made in Germany

From the first idea up to the final product - the UP 7BMW has been designed throughout in Schmallenberg. In the same manner each amplifier is assembled and 100% tested here before leaving our company.



Further information at: [www.audiotec-fischer.com](http://www.audiotec-fischer.com)